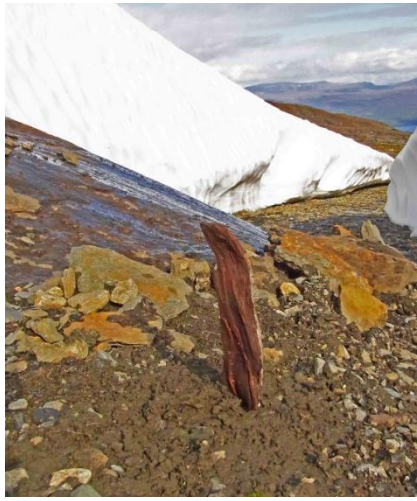


Photo gallery showing a representative selection of findings during summer field work 2010 in widely different parts of the Scandes. All were recovered several hundred meters above the treeline, close to the snout of receding glaciers and snow/ice patches. No datings yet available.



Pinus, Helagsglaciären, 1350 m a.s.l.



Pinus, Låktatjåkka, 982 m a.s.l. (upraised)



Betula, Låktatjåkka, 974 m a.s.l.



Pinus, Slåttatjåkka, 1087 m a.s.l.



Pinus, Ö. Syterglaciären, 1190 m a.s.l.



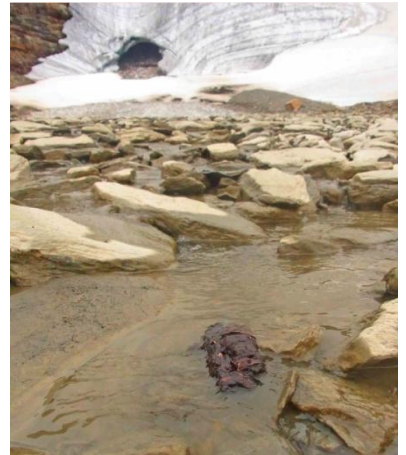
Peat cake, Tärnaglaciären, 1070 m a.s.l.



Betula, Tärnaglaciären, 1070 m a.s.l.



Betula, Kåppasglaciären, 1027 m a.s.l.



Betula, Kåppasglaciären, 1020 m a.s.l.



Betula, Njulla, 1025 m a.s.l.



Pinus, Njulla, 1005 m a.s.l.



Betula, Njulla, 1013 m a.s.l.